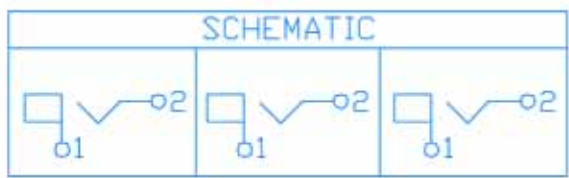
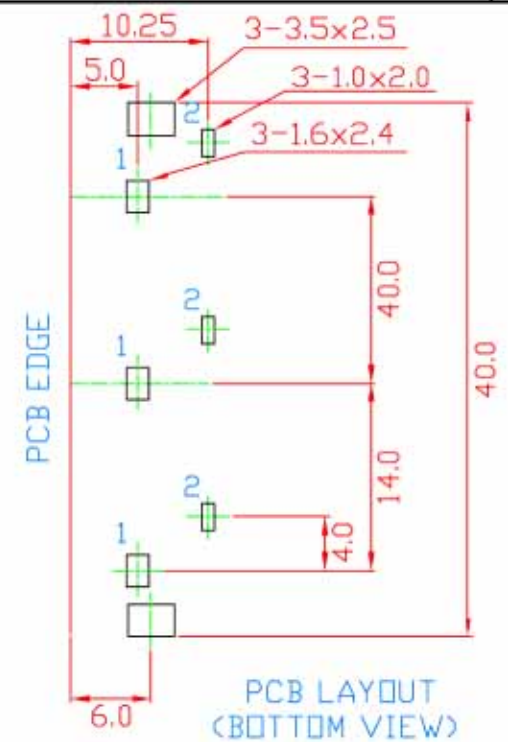
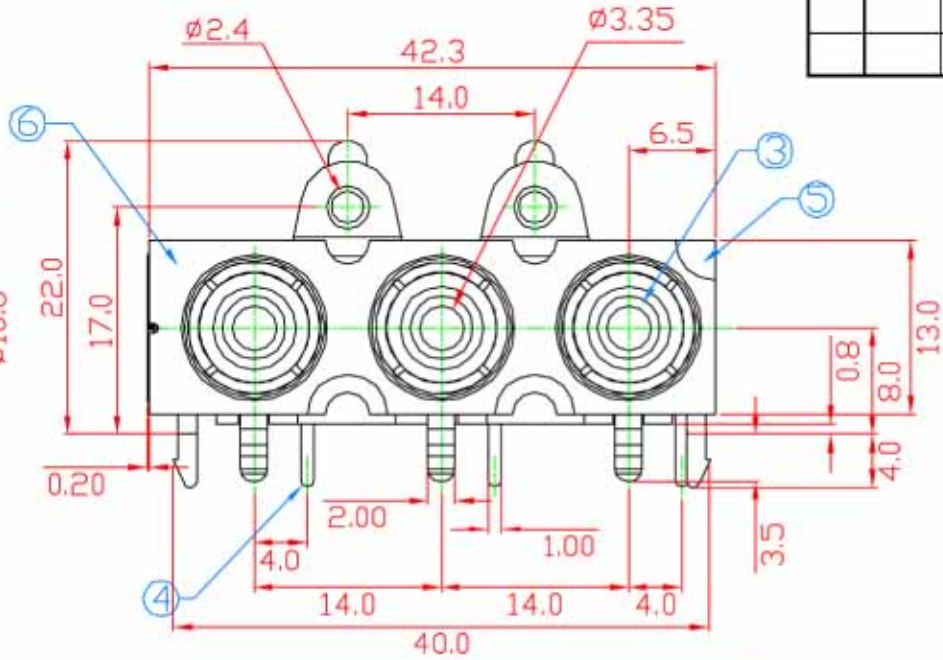
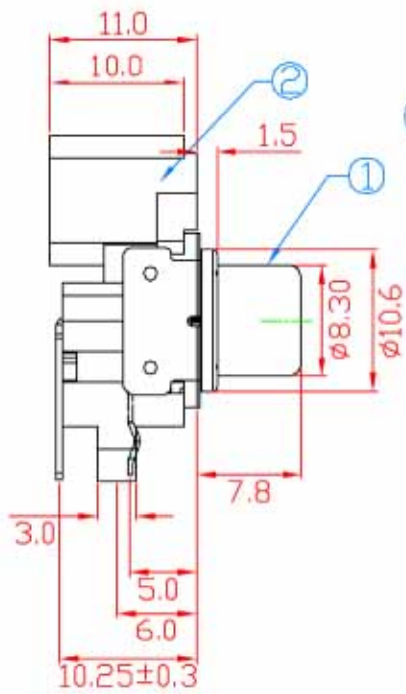
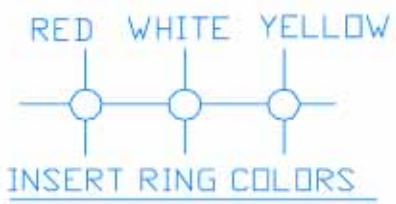


毅永企業有限公司 E-YUNG ENTERPRISE CO., LTD.

REV	ZONE	REVISION	DATE



NO.	NAME	MATERIAL	FINISH	Q'TY
1	BARREL	BRASS 0.40	NICKEL PLATED	3
2	HOUSING	ABS	WHITE	3
3	INSERT RING	PBT G.F.	RED,WHITE,YELLOW	1
4	CONTACT TERM.	BRASS 0.50	TIN PLATED	3
5	COVER	ABS	BLACK	1
6	SHELL COVER	BRASS 0.20	NICKEL PLATED	1



Specification:
 Contact Resistance: 30m Ohm. Max. At AC 100mA Max.1KHz
 Insulation Resistance: 100M Ohm Min. At 500V DC.
 Rated Voltage And Current: DC 12V,2A Max ; AC 100V,1A Max.
 Dielectric Withstanding Voltage: 500VAC At 60Hz For 1 Minute
 Durability (Life Test): 4000 Cycles
 Insertion Force: 0.3~3.0 Kg.
 Extraction Force: 0.3~3.0Kg.