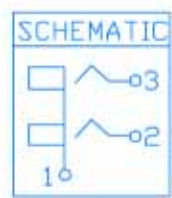
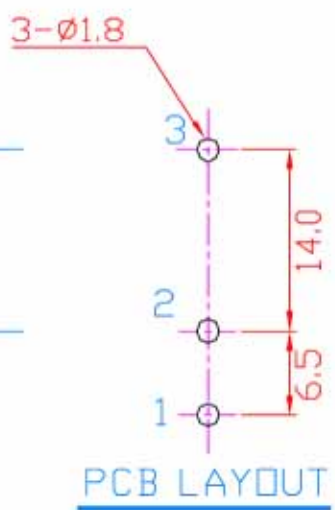
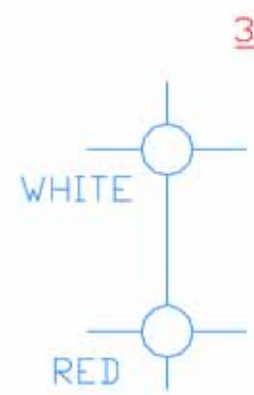
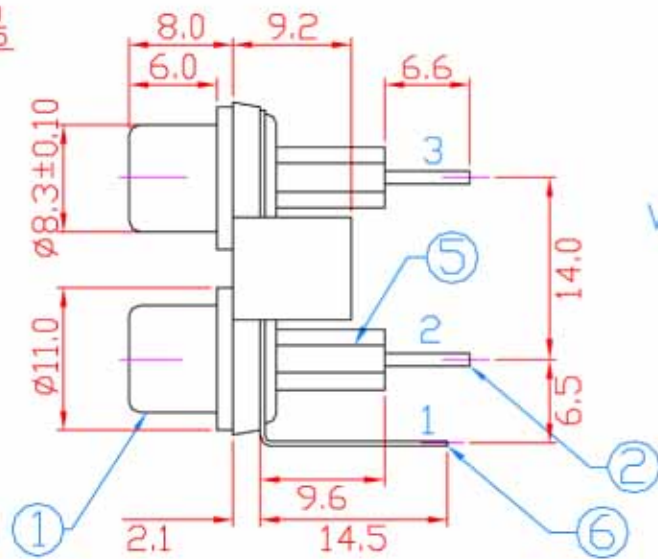
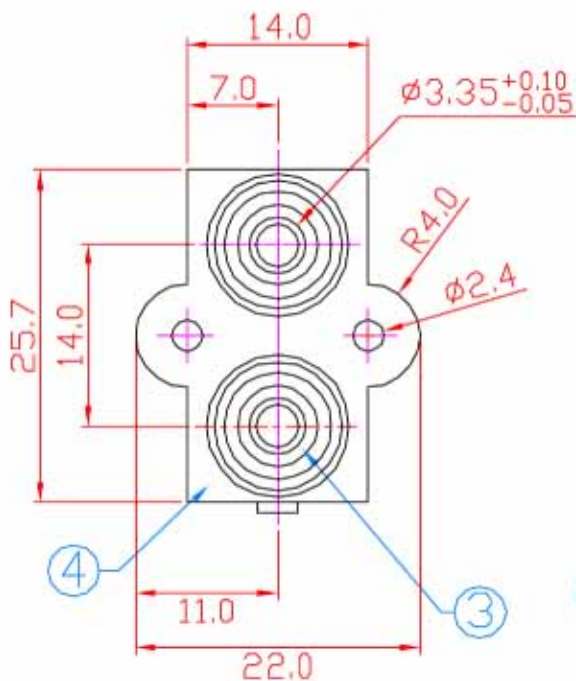


# 毅永企業有限公司 E-YUNG ENTERPRISE CO., LTD.

REV	ZONE	REVISION	DATE



NO.	NAME	MATERIAL	FINISH	Q'TY
1	BARREL	BRASS t:0.40	NICKEL PLATED	2
2	CONTACT PIN	BRASS t:1.0	NICKEL PLATED	2
3	INSERT RING	PBT G.F.	RED/WHITE	2
4	HOUSING	ABS	BLACK	1
5	COLLOID	PBT G.F.	BLACK	2
6	GROUND TERM.	C.R.S. t:0.40	TIN PLATED	1

### Specification:

Contact Resistance: 30m Ohm. Max. At AC 100mA Max. 1KHz  
 Insulation Resistance: 100M Ohm Min. At 500V DC.  
 Rated Voltage And Current: DC 12V, 2A Max ; AC 100V, 1A Max.  
 Dielectric Withstanding Voltage: 500VAC At 60Hz For 1 Minute  
 Durability (Life Test): 4000 Cycles  
 Insertion Force: 0.3-3.0 Kg.  
 Extraction Force: 0.3-3.0Kg.