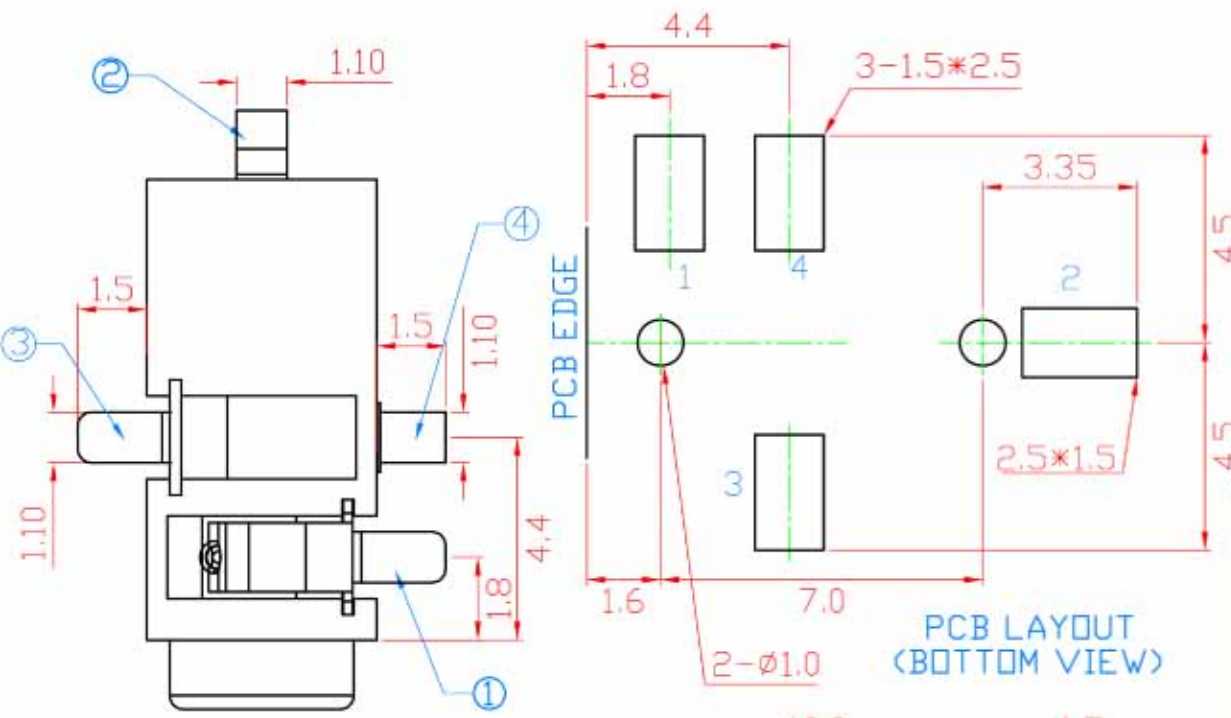
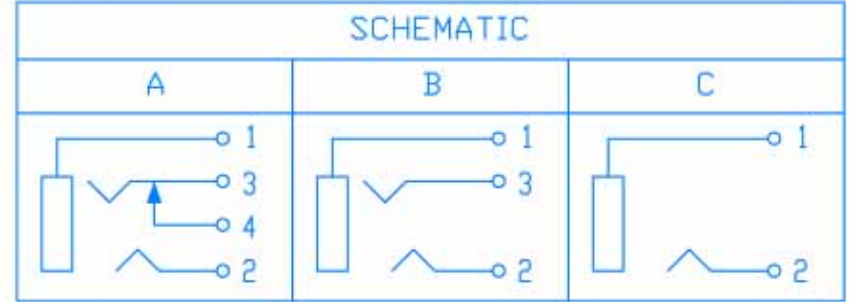
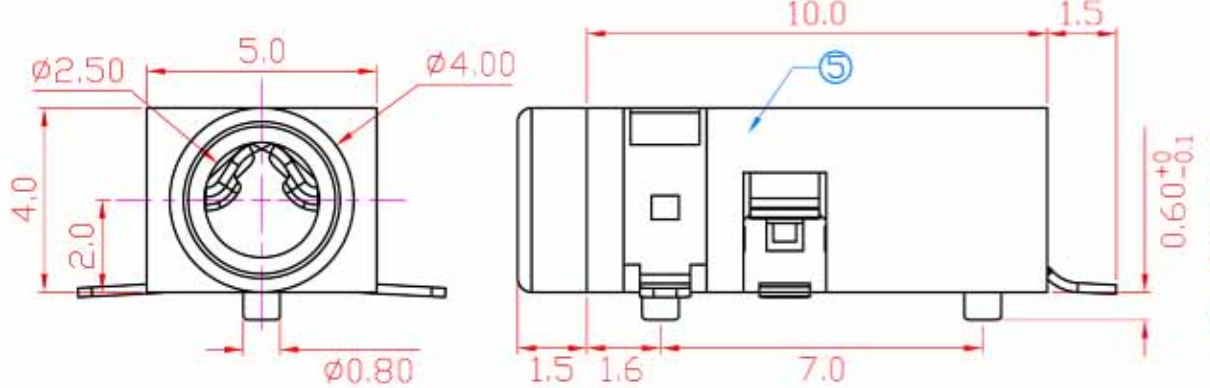


REV	ZONE	REVISION	DATE

NO.	NAME	MATERIAL	FINISH	Q'TY
1	GROUND TERM.	PBS 0.20	GOLD PLATED	1
2	TIP TERM.	PBS 0.20	GOLD PLATED	1
3	RING TERM.	PBS 0.20	GOLD PLATED	1
4	BREAK TERM.	BRASS 0.20	GOLD PLATED	1
5	HOUSING	NYLON PA9T GF.	BLACK	1



PCB LAYOUT (BOTTOM VIEW)



SCHEMATIC

Specification:
 Contact Resistance: 30m Ohm. Max. At AC 100mA Max.1KHz
 Insulation Resistance: 100M Ohm Min. At 500V DC.
 Rated Voltage And Current: DC 12V,2A Max ; AC 100V,1A Max.
 Dielectric Withstanding Voltage: 500V AC For 1 Minute.
 Durability (Life Test): A: For Phosphor Bronze 1500 Cycles Minimum.
 B: For PBS 2000 Cycles Minimum.
 Insertion Force: 0.3~3.0 Kg.
 Extraction Force: 0.3~3.0Kg.