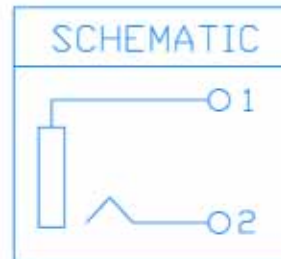
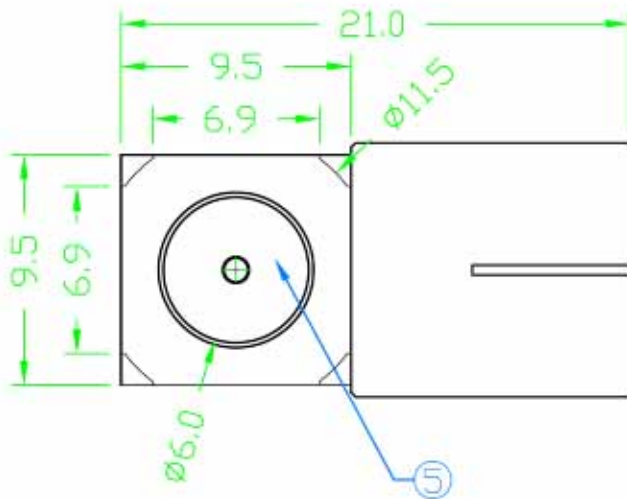
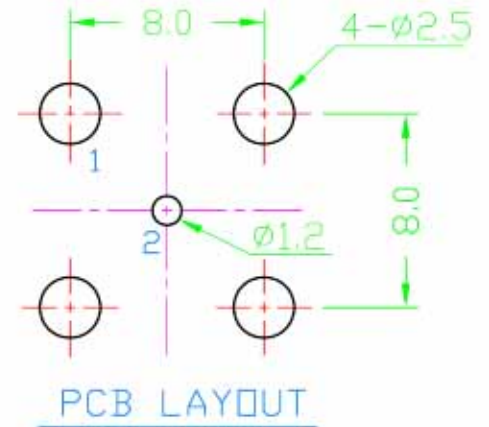
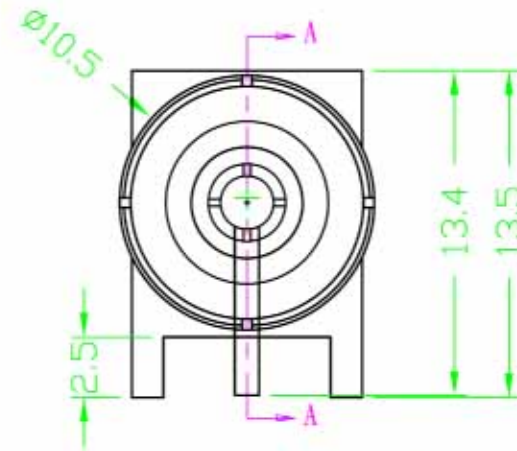
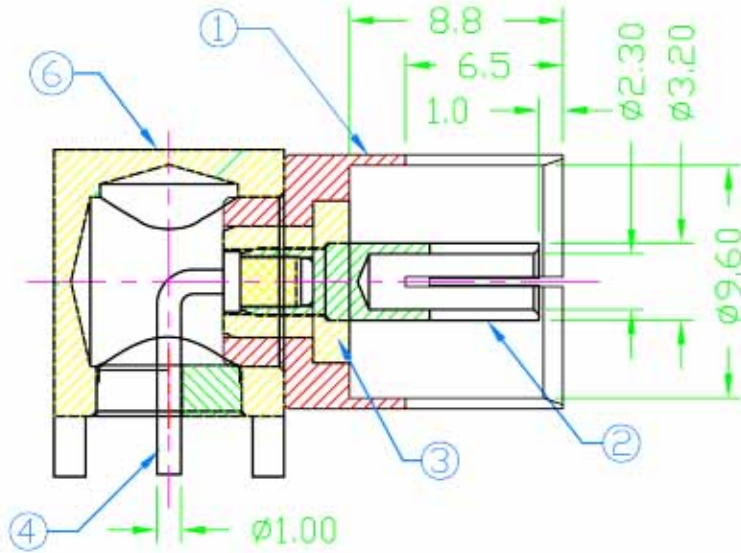


REV	ZONE	REVISION	DATE



**Specification:**

Contact Resistance: 50m Ohm Max.

Insulation Resistance: 500M Ohm Min. At 500V DC.

Dielectric Withstanding Voltage: 500VAC For 1 Minute.

Insertion Force: 0.8~3.5 Kg.

Extraction Force: 0.8~3.5Kg.

Keeping Force: 4.0Kg Min.

NO.	NAME	MATERIAL	FINISH	Q'TY
1	BODY	BRASS	NICKEL PLATED	1
2	CENTER PIN	BRASS	GOLD PLATED	1
3	INSULATOR	TEFLON	WHITE	1
4	CENTER PIN	BRASS	GOLD PLATED	1
5	INSULATOR	TEFLON	WHITE	1
6	BRACKET	BRASS	NICKEL PLATED	1