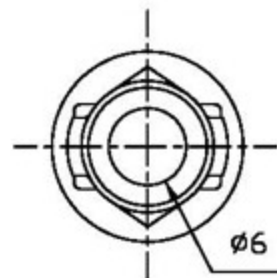
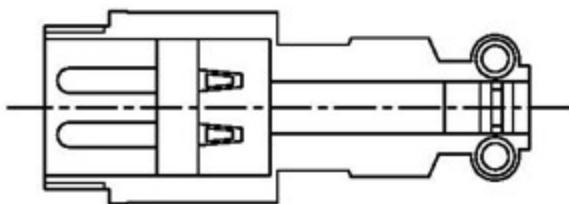
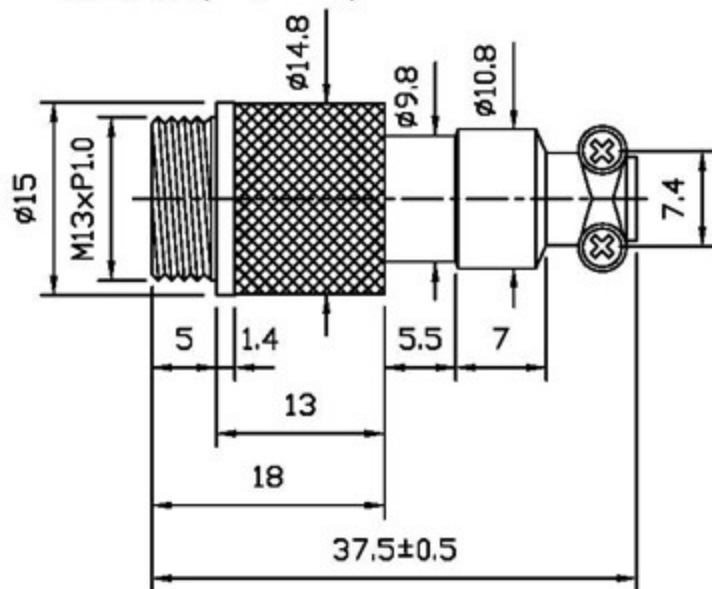
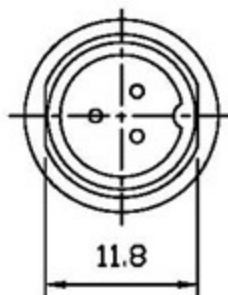


AP12C-M-6: M12 TYPE 6P長型公插(6P,MALE)

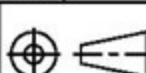


- ITEM NO.
 AP12C-M-2: M12 TYPE,2P MALE
 AP12C-M-3: M12 TYPE,3P MALE
 AP12C-M-4: M12 TYPE,4P MALE
 AP12C-M-5: M12 TYPE,5P MALE
 AP12C-M-6: M12 TYPE,6P MALE

M12 TYPE MIC MALE 3P

UNLESS OTHERWISE SPECIFIED
 GENERAL TOLERANCES

0.5~6 = ±0.2
 >6~30 = ±0.4
 >30~120 = ±0.6

NO.	DESCRIPTION	QTY	MATERIAL	SPECIFICATION	REMARK	
DRAW BY	CHUN	07/25/11	SCALE	2 : 1	PROJ 	
DEGN BY	YANG		UNIT	MM		
APPD BY	RAY					
					ITEM NO.	AP12C-M
					TITLE	MIC CONNECTOR
					DWG NO.	AP12C-M-CN36-A1

DATE DRAWG BY REVISED