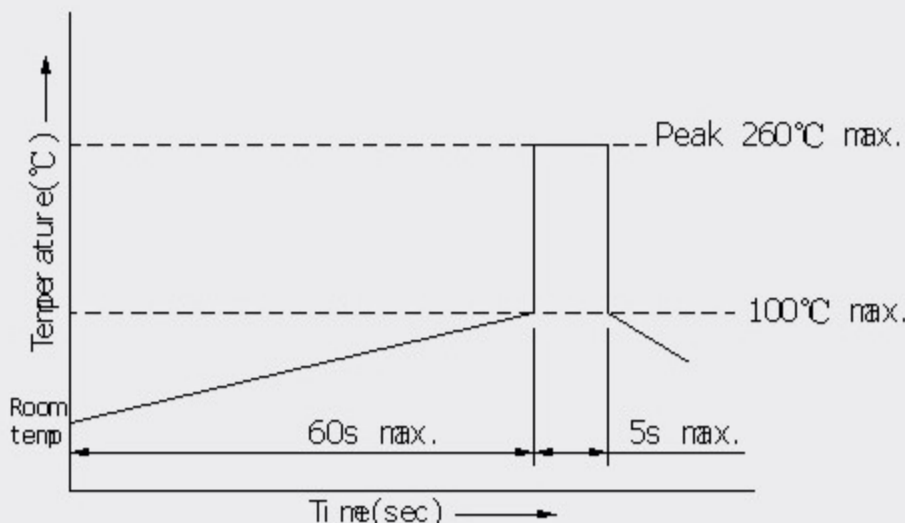


SPECIFICATION

Contact Rating: 50 mA @ 12VDC;
 Electrical life: 1,000,000 cycles
 Mechanical life: 1,000,000 cycles min;
 Position Travel: 0.25±0.1
 Insulation Resistance: > 100MΩ DC250V;
 Withstand Voltage: AC250V 1 minute;
 Contact Resistance: < 100mΩ;
 Ambient Temper.: -25°C to 70°C;
 Operating Force: 80±20 gf; 120±30 gf; 180±50 gf;
 Soldering Process: Hand soldering : Use a soldering iron of 30 watts,controlled at 380°C approximately 3 seconds while applying solder.
 Wave soldering: When applying wave soldering, the peak temperature of the wave Oven should be set to 260°C max. Condition for soldering (Wave & Non-washable Type) Temperature Profile: (Figure 1)

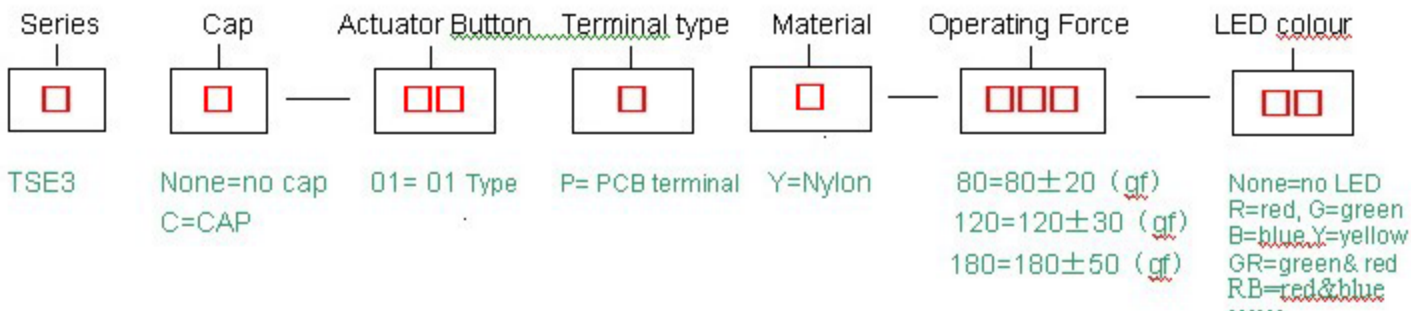


Items	Condition
Preheating temperature	Ambient temperature of the soldered surface of PC board. 100°C max.
Preheating time	60s max.
Soldering temperature	260°C max.
Continuous dipping time	5s max.
Number of soldering	2 times max.

Wave soldering (Figure 1)

HOW TO ORDER

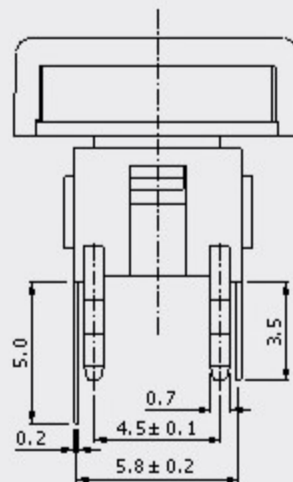
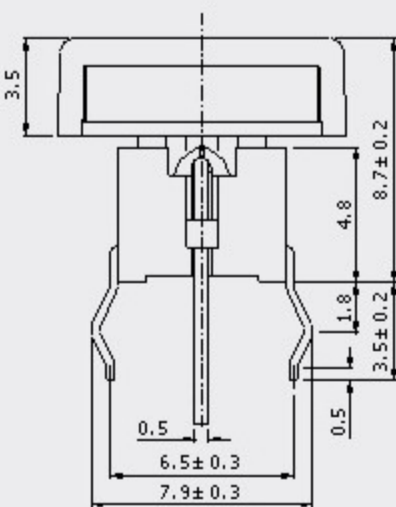
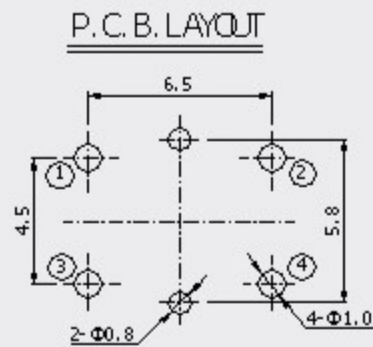
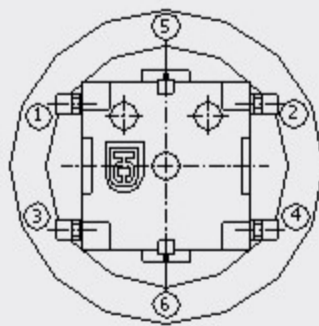
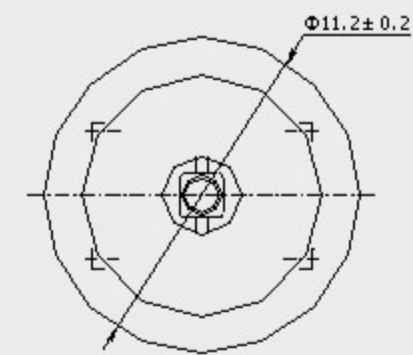
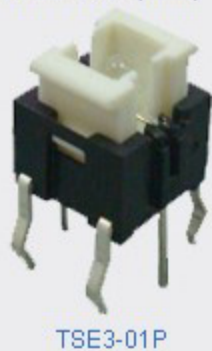
HOW TO ORDER



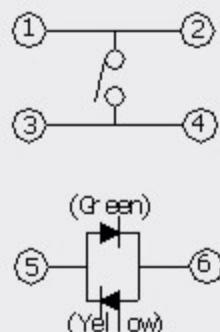
EXAMPLE: TSE3-01PY-80-G; TSE3-01PY-80-GR; TSE3C-01PY-80-R; TSE3C-01PY-80-RY.

DIMENSION DRAWING

© TSE3-01P (mm)



CIRCUIT DIAGRAM



MODEL NO	OF(gf)	MARK
TSE3C-01PY-80-***	80±20	***: LED colour based on client's request (See follow form)
TSE3C-01PY-120-***	120±30	
TSE3C-01PY-180-***	180±50	

COLOR OF LED

Single Colour				Double Colour			
G	Green	Y	Yellow	G R	R, B	R, Y	
R	Red	B	Blue	G B	G, Y	Y, B	