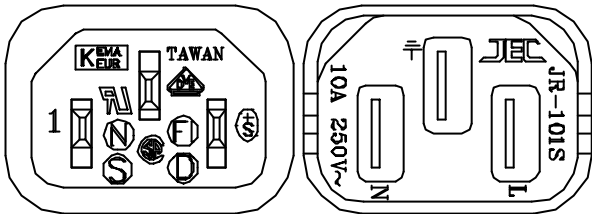
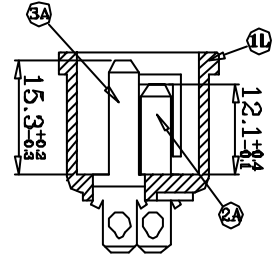
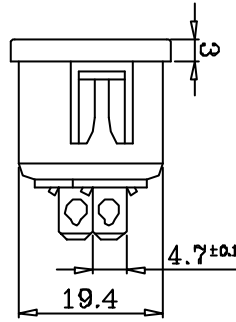
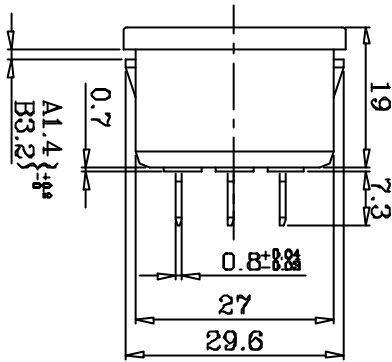
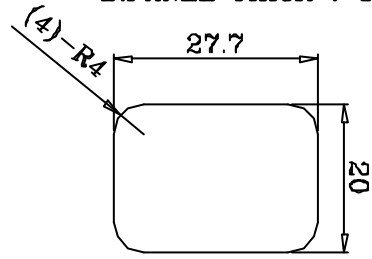
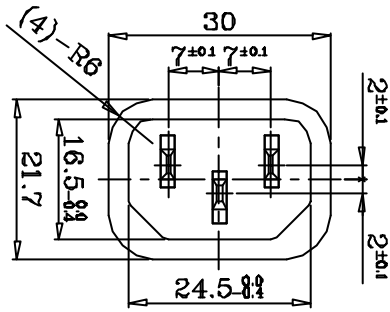
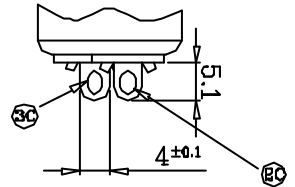


MOUNTING HOLE

A: PANEL THICK : 1.2mm
B: PANEL THICK : 3.0mm



Short Terminal



規格 SPECIFICATIONS

- 額定
1. RATING : 10A 250VAC
- 耐電壓
2. WITHSTAND VOLTAGE : AC 2000V 1Min.
- 絕緣電阻
3. INSULATION RESISTANCE : MORE THAN 100MΩ (at DC 500V)
- 操作溫度
4. OPERATING TEMPERATURE : -25° C TO +85° C (MAX)

認可安規
5. SAFETY



3C	GROUNDING CONTACT	1	Bsp1-1/2H	2t	Sn-PLATED	Q101-03C
2C	CONTACT	2	Bsp1-1/2H	2t	Sn-PLATED	Q101-02C
3A	GROUNDING CONTACT	1	Bsp1-1/2H	2t	Sn-PLATED	Q101-03A
2A	CONTACT	2	Bsp1-1/2H	2t	Sn-PLATED	Q101-02A
1L	BODY	1	Nylon	#66		Q101-01L
編號	零件名稱	數量	材質	規格	加工處理	備註
設計	L,Chun-Ting 891027	品名	系列承認圖		無註記公差	第三角法
製圖	L,Chun-Ting 891027		品號			
描圖	L,Chun-Ting 891027		圖號		A101-00X	比例
校對						mm
核準						