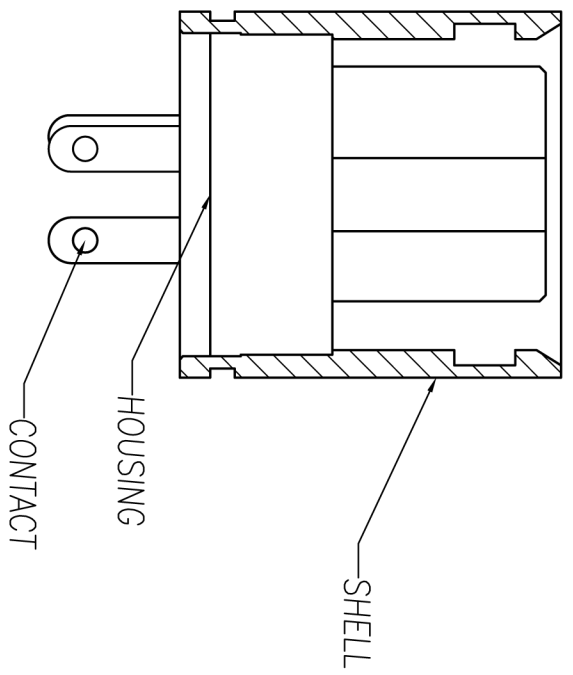
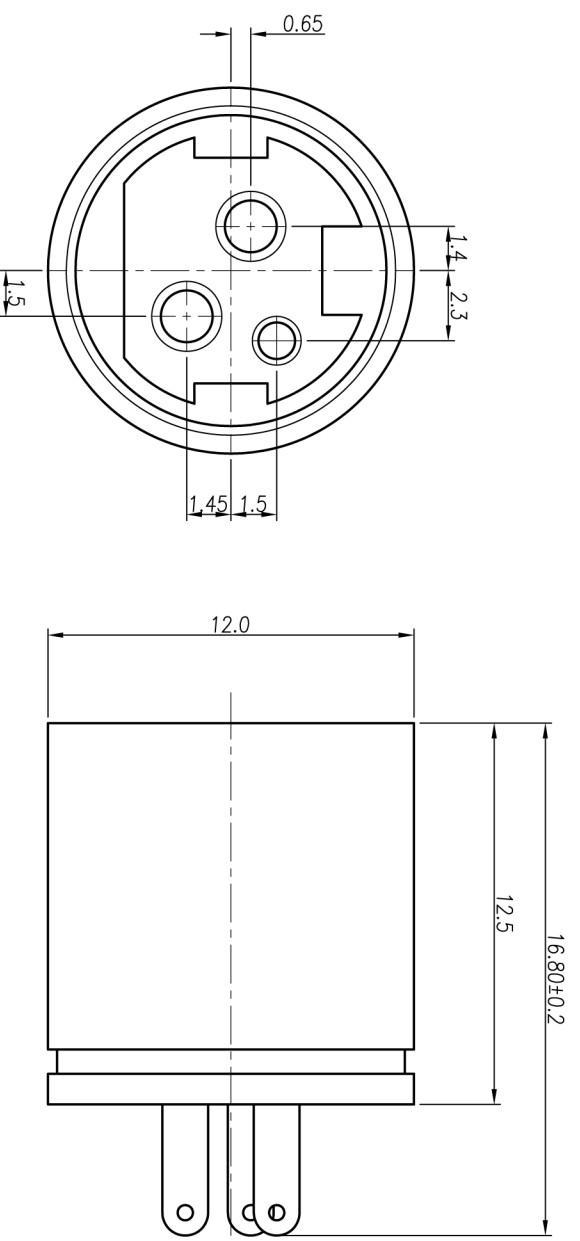


CUSTOMER DRAWING

REV.	DESCRIPTION	APPL. BY	DATE	ECN NO.
A	RELEASE	Fdo Wang	13/04/09"	
B				
C				



NOTE:

1.MATERIAL:

1-1. HOUSING : PBT UL94V-0 ; COLOR : BLACK

1-2. CONTACT : PHOSPHOR BRONZE

1-3. SHELL : BRASS

2.PLATING:

2-1. CONTACT : TIN PLATED 60u" OVER NICKEL

2-2. SHELL : NICKEL PLATED 60u" ~ 100u" OVER ALL

3.ELETRICAL SPECIFICATION :

3-1. RATED CURRENT : 7.5A/DC MAX

3-2. RATED VOLTAGE : 25V/DC MAX

4. ENVIRONMENTAL :

4-1. OPERATION TEMPERATURE : -20 ℃~85℃

DRAW	KU	APPL		UNIT	mm	TOLERANCE				TITLE	POWER DIN 3PIN (F) LOCK	SHEET	⊕	
CHECK				SCALE	1:1	x ±0.20 xx ±0.15 xxx ±0.10 xxxx ±0.05 ANGULA ±1°			PART NO.	PD-03F1-02	DWG NO.	QC1814	VERSION	A