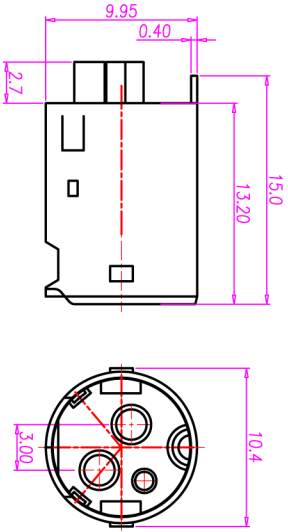
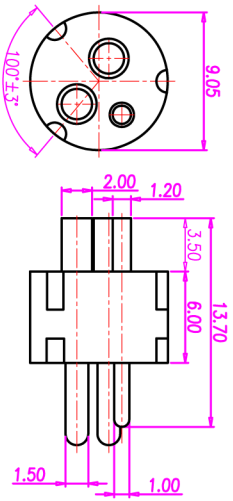
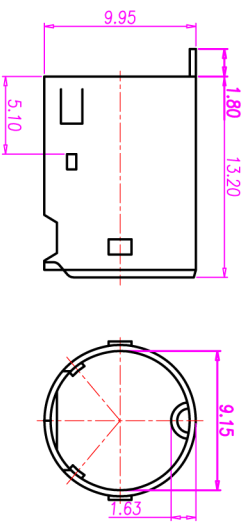


CUSTOMER DRAWING

REV.	DESCRIPTION	APPROVED BY	DATE	ECN N.L.
A	RELEASE	Fido Wang	14/04/09	
B				
C				



NY-DM099(HOUSING&PIN)



OY-DM0031(SHELL)

1. MATERIAL :
 - 1-1. HOUSING : PBT UL94V-0 ; COLOR : BLACK
 - 1-2. CONTACT : BRASS
 - 1-3. SHELL : BRASS
2. FINISH :
 - 2-1. CONTACT : 50 MICRO INCHES MIN. SILVER PLATED UNDER PLATE : NICKEL
 - 2-2. SHELL : NICKEL PLATED 50u" OVER ALL
3. ELECTRICAL SPECIFICATION :
 - 3-1. Rated current : 7.5A/DC MAX
 - 3-2. Rated Voltage :25V/DC MAX
4. Environmental :
 - 4-1. Operation Temperature : -20 °~85°c

DRAWN	KU	APPEND	UNIT	MM	TOLERANCE	TITLE	
CHECKED			SCALE	1:1	±.015	POWER DIN SPIN (M) MOLDING TYPE	
					±.010	PD-03M2-21	DWG N.L.
					±.008		QC2039
					±.005		
					±.003		
					±.002		
					±.001		
					±.0005		
					±.0002		
					±.0001		
					±.00005		
					±.00002		
					±.00001		
					±.000005		
					±.000002		
					±.000001		
					±.0000005		
					±.0000002		
					±.0000001		
					±.00000005		
					±.00000002		
					±.00000001		
					±.000000005		
					±.000000002		
					±.000000001		
					±.0000000005		
					±.0000000002		
					±.0000000001		
					±.00000000005		
					±.00000000002		
					±.00000000001		
					±.000000000005		
					±.000000000002		
					±.000000000001		
					±.0000000000005		
					±.0000000000002		
					±.0000000000001		
					±.00000000000005		
					±.00000000000002		
					±.00000000000001		
					±.000000000000005		
					±.000000000000002		
					±.000000000000001		
					±.0000000000000005		
					±.0000000000000002		
					±.0000000000000001		
					±.00000000000000005		
					±.00000000000000002		
					±.00000000000000001		
					±.000000000000000005		
					±.000000000000000002		
					±.000000000000000001		
					±.0000000000000000005		
					±.0000000000000000002		
					±.0000000000000000001		
					±.00000000000000000005		
					±.00000000000000000002		
					±.00000000000000000001		
					±.000000000000000000005		
					±.000000000000000000002		
					±.000000000000000000001		
					±.0000000000000000000005		
					±.0000000000000000000002		
					±.0000000000000000000001		
					±.00000000000000000000005		
					±.00000000000000000000002		
					±.00000000000000000000001		
					±.000000000000000000000005		
					±.000000000000000000000002		
					±.000000000000000000000001		
					±.0000000000000000000000005		
					±.0000000000000000000000002		
					±.0000000000000000000000001		
					±.00000000000000000000000005		
					±.00000000000000000000000002		
					±.00000000000000000000000001		
					±.000000000000000000000000005		
					±.000000000000000000000000002		
					±.000000000000000000000000001		
					±.0000000000000000000000000005		
					±.0000000000000000000000000002		
					±.0000000000000000000000000001		
					±.00000000000000000000000000005		
					±.00000000000000000000000000002		
					±.00000000000000000000000000001		
					±.000000000000000000000000000005		
					±.000000000000000000000000000002		
					±.000000000000000000000000000001		
					±.0000000000000000000000000000005		
					±.0000000000000000000000000000002		
					±.0000000000000000000000000000001		
					±.00000000000000000000000000000005		
					±.00000000000000000000000000000002		
					±.00000000000000000000000000000001		
					±.000000000000000000000000000000005		
					±.000000000000000000000000000000002		
					±.000000000000000000000000000000001		
					±.0000000000000000000000000000000005		
					±.0000000000000000000000000000000002		
					±.0000000000000000000000000000000001		
					±.00000000000000000000000000000000005		
					±.00000000000000000000000000000000002		
					±.00000000000000000000000000000000001		
					±.000000000000000000000000000000000005		
					±.000000000000000000000000000000000002		
					±.000000000000000000000000000000000001		
					±.0000000000000000000000000000000000005		
					±.0000000000000000000000000000000000002		
					±.0000000000000000000000000000000000001		
					±.00000000000000000000000000000000000005		
					±.00000000000000000000000000000000000002		
					±.00000000000000000000000000000000000001		
					±.000000000000000000000000000000000000005		
					±.000000000000000000000000000000000000002		
					±.000000000000000000000000000000000000001		
					±.0000000000000000000000000000000000000005		
					±.0000000000000000000000000000000000000002		
					±.0000000000000000000000000000000000000001		
					±.005		
					±.002		
					±.001		
					±.0005		
					±.0002		
					±.0001		
					±.005		
					±.002		
					±.001		
					±.0005		
					±.0002		
					±.0001		
					±.005		
					±.002		
					±.001		
					±.0005		
					±.0002		
					±.0001		
					±.005		
					±.002		
					±.001		
					±.0005		
					±.0002		
					±.0001		
					±.005		
					±.002		
					±.001		